



NCA has been an industry leader in custom manufacturing since 1962. By working directly with our customers we design and manufacture quality products that meet their individual needs and ensure successful projects.

**OTHER NCA PRODUCTS:**

- Helicopter Portable Drills
- Man-Pack Portable Compressors and Drills
- Single-Stage Air Compressors
- Two-Stage Air Compressors
- Booster Air Compressors
- PTO Air Compressors
- Drill Rigs



PROVIDING INNOVATIVE SOLUTIONS TO CUSTOMERS ON EVERY CONTINENT

**Head Office**

3425 Semenyk Court, Mississauga, Ontario L5C 4P9  
Tel: (905) 897-9800 • Fax: (905) 897-9900  
E-mail: headoffice@nationalcompressedair.com

**Sudbury**

119 Magill Street, Lively, Ontario P3Y 1K6  
Tel: (705) 692-4794 • Fax: (705) 692-4796

**London**

378 Sovereign Road, London, Ontario N6M 1A5  
Tel: (519) 659-2691 • Fax: (519) 659-3590

**Edmonton**

P.O. Box 4046, Spruce Grove, Alberta T7X 3A8  
Tel: (780) 960-6085 • Fax: (780) 960-6873

**Website**

[www.nationalcompressedair.com](http://www.nationalcompressedair.com)

# H E L I C O P T E R P O R T A B L E

- ✓ LIGHT WEIGHT
- ✓ ENERGY EFFICIENT
- ✓ COMPACT SIZE
- ✓ FIELD SERVICEABLE
- ✓ HIGH PRESSURE
- ✓ SUPERIOR RELIABILITY
- ✓ HIGH VOLUME
- ✓ EASE OF OPERATION

# LIGHTWEIGHT AIR COMPRESSORS





NCA is a world leader in the development of lightweight, high-pressure air compressors. We offer the widest range of lightweight compressors in the industry.

Our expertise and design flexibility provides our customers with high performance compressors that operate under extreme conditions or in any location.

Whether it's the jungles of South East Asia, the mountains of South America or the Canadian Arctic, our design excellence and equipment reliability have been proven by years of first hand field experience.



Skid-mounted Heli Portable Compressor

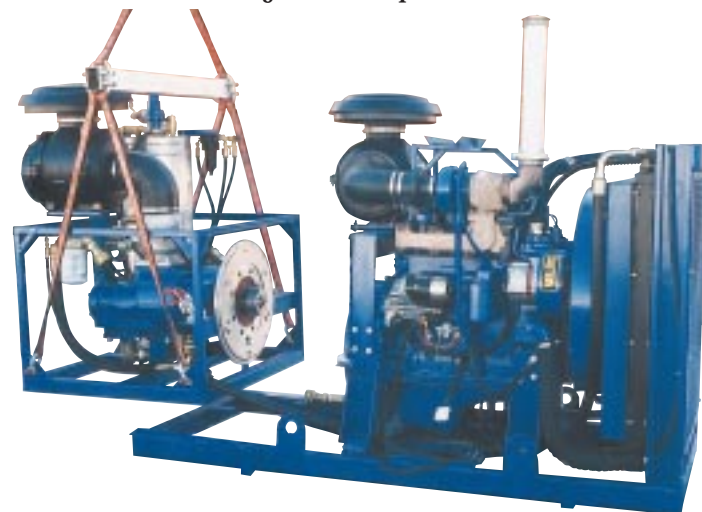
**Custom designs and unique applications are always welcome!**

**DESIGN FEATURES:**

- Compact Size and Lightweight
- High Pressure
- High Volume
- Oil-flooded Screw Compressor
- Field Serviceable
- Full Range Air Intake Modulation
- Engine Speed Modulation
- Booster Applications Available
- High Performance
- Superior Reliability
- Simple Maintenance
- Energy Efficiency
- Easy to Operate

**SAVE TIME & MONEY:**

- Higher Penetration Rates
- Minimized Downtime
- Lower Helicopter Costs
- Faster Project Completion



Two-piece Heli Portable Compressor

**NCA LIGHTWEIGHT AIR COMPRESSORS SPECIFICATIONS**

**ATMOSPHERIC**

COMPRESSOR MODEL	VOLUME SCFM (m3/min)	PRESSURE PSIG (BAR)	ENGINE MAKE & MODEL	ENGINE HP @RPM	DIMENSIONS - L xWx H	WEIGHT LBS (KG)
NCA 6-9 GSD-H	210 (5.9)	130 (9.0)	ISUZU 4JB	78 @ 3000	67" x 33" x 46"	1,180 (536)
NCA 6-10 GSD-H-V	200 (5.7)	150 (10.3)	VW ADE.1.9L	75 @ 4000	67" x 33" x 46"	880 (400)
NCA 6-10 GSD-H-C	210 (5.9)	150 (10.3)	CUMMINS B3.3	85 @ 2600	67" x 33" x 46"	1,210 (550)
NCA 6-12 GSD-H	200 (5.7)	175 (12.1)	VW ADE.1.9L	75 @ 4000	67" x 33" x 46"	935 (425)
NCA 7-10 GSD-H	250 (7.1)	150 (10.3)	CUMMINS B3.3	85 @ 2600	67" x 33" x 46"	1,270 (577)
NCA 7-17 GSD-H	250 (7.1)	250 (17.2)	CUMMINS B3.9	130 @ 2500	72" x 33" x 48"	1,800 (816)
NCA 8-14 GSD-H	300 (8.4)	200 (13.8)	CUMMINS B3.9	116 @ 2500	72" x 33" x 48"	1,650 (748)
NCA 8-15 GSD-H	300 (8.4)	220 (15.2)	CUMMINS B3.9	130 @ 2500	72" x 33" x 48"	1,800 (816)
NCA 10-8 GSD-H	360 (10.2)	110 (7.6)	CUMMINS B3.9	116 @ 2500	72" x 33" x 48"	1,650 (748)
NCA 10-10 GSD-H	360 (10.2)	150 (10.3)	CUMMINS B3.9	116 @ 2500	72" x 33" x 48"	1,800 (816)

**BOOSTER (90-100 PSIG Suction Pressure)**

NCA 19-24 GSD-B-H	670 (19.0)	350 (24.1)	CUMMINS B3.9	130 @ 2500	72" x 34" x 48"	1,800 (816)
-------------------	------------	------------	--------------	------------	-----------------	-------------

**DESIGN OPTIONS:**

- Helicopter Lift Harness or Rigid Lifting Frame
- Bush Guard Protection
- Modular (Multi-Lift for Large Compressors)
- Trailer • Adjustable Leveling Legs
- Diesel, Gasoline, Hydraulic or PTO Drive
- High Elevation Capabilities • Fuel Tank
- High or Low Ambient Temperature Capabilities



Bush Guard, Rigid Frame and Fuel Tank

**PROVIDING INNOVATIVE SOLUTIONS TO CUSTOMERS ON EVERY CONTINENT**